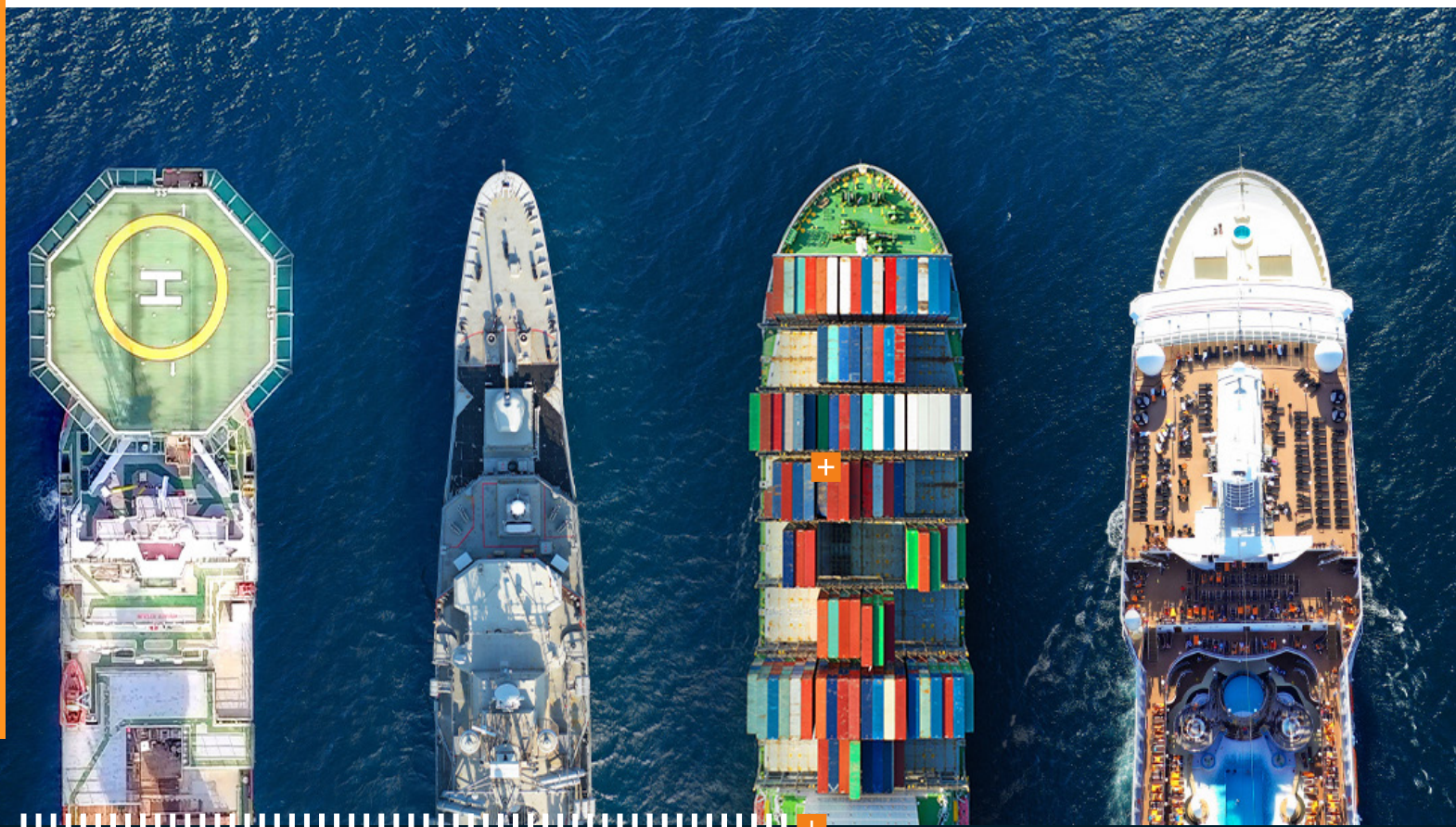




NSH **BRIGHTSEAS**

上海诺实湃海海洋科技有限公司



关于我们 ABOUT



上海海波船用设备有限公司NSH Poseidon Ships Equipment Co.,Ltd.是一家由上海波塞通船用设备有限公司Poseidon Ships Equipment Co.,Ltd.和挪威North Sea Handling拥有同等股权合作成立的合资公司。挪威North Sea Handling 是一个致力于为船舶工业提供市场领先的货物和旅客通道设备以及降低能耗的国际化公司。NSH Poseidon以NSH的品牌和专有技术活跃在中国市场，为国内外船东和中国船厂提供货物和旅客通道设备。
NSH Poseidon Ships Equipment Co.,Ltd is a joint venture company which is established by Poseidon Ships Equipment Co.,Ltd. and North Sea Handling with equal equity.North Sea Handling is an international company focusing on providing the maritime industry with market-leading solutions within cargo/passenger access equipment and energy efficiency. NSH Poseidon plays an active role in the Chinese market with NSH's brand and proprietary technology,providing cargo and passenger access equipments for Chinese shipyards and shipowners from all over the world.

在过去的日子里，我们对行业有很强的洞察力和非常丰富的经验。基于我们对船舶和港口运作的广泛知识和专业领域不同技术知识的综合掌握，我们可以对我们的客户在他们对最好和最具有竞争力的设备研究上给予协助。通过我们的网络，我们可以为我们的客户提供新造船项目和全球维护提供服务和交钥匙工程。
Over the years we have gained great insight into the industry and a lot of experience. By combining knowledge of ship and harbor operations with extensive knowledge of different technologies within our fields of expertise, we can assist our clients in their search for the best and most competitive equipment. Through our network of partners, we can provide our customers with service and turn-key deliveries both for new builds and conversions worldwide.

创新和持久是我们日常工作的准则，在和我们合作伙伴的一起努力下，用尽所能开发产品和提升观念来满足客户目前和未来的需求。创新是我们的标志，一直驱动着我们。持久映射了什么是重要的价值创造，这是我们正在做的和我们的视野。
Innovation and long-term-philosophy are keywords in our everyday work and together with our partners we are pushing boundaries to develop equipment and concepts to meet our customers' current and future needs. Innovation is our trademark and what drives us. Long-term-philosophy reflects the way we act and our view of what is most important in respect of value creation.

客货通道 Cargo and Passenger Access

我们供应尖端设备，为满足客户需求，无畏最艰难的挑战。
Equipment constitute our core business and is represented, within the group, by NSH Ships Equipment. We are a supplier of state of the art equipment and are not afraid to shoulder the most demanding challenges to meet our customers' needs.

客货进出设备包括一系列产品，如渡轮、客轮、滚装船、舰艇和近海补给船等绝大多数类似船舶的跳板、货梯、门、舱口盖、接驳平台、舷侧装卸、收放系统均为我们提供的设备的典型例子。
Cargo and passenger access solutions consist of a wide range of products which cover most types of ships such as Ferries, Cruise, Ro-Ro, Navy, Offshore Support, Bulk and Container vessels. Ramps, Cargo Elevators, Doors, Hatch Covers and Side Loading Systems are typical examples of equipment we deliver. We are not afraid of thinking outside the box, sharing our knowledge and experience to see our clients succeed.

我们是持有挪威和瑞典海事当局授权的少数几家公司之一，具备对船舶、渔船货物装卸设备和海上移动平台上的甲板起重机做初步认证及定期检查的资质。
NSH Ships Equipment is one of the few companies authorized by Norwegian and Swedish maritime authorities to carry out initial certifications and periodic control of cargo-handling equipment on ships, fishing vessels and deck cranes on mobile offshore units.



散货船和 集装箱船 Bulk & Container



吊离式舱口盖

Hatch Cover Lift On/Off Type

吊离式舱口盖通常由船上或岸上的吊机吊装，使之堆放在船上或岸上。
The Lift On/Off Type Hatch Covers are usually operated by some kind of lifting gear onboard the vessel and stacked either onboard or ashore.

NSH船舶设备提供各种定制的不同舱口盖以适应各种船舶的营运情况。
NSH Ships Equipment delivers a wide range of different hatch covers tailor made to suit with the ship and its operation conditions.

侧移式舱口盖

Hatch Cover Side-rolling Type

侧移式舱口盖通常由链条/齿轮齿条驱动，水平存放。
The Side-rolling Type Hatch Covers are usually operated by either a drive chain or by a rack/pinion solution. They are usually stacked in horizontal position.

NSH船舶设备提供各种定制的不同舱口盖以适应各种船舶的营运情况。
NSH Ships Equipment delivers a wide range of different hatch covers tailor made to suit with the ship and its operation conditions.

背载式舱口盖

Hatch Cover Piggy-back Type

背载式舱口盖类似于侧移式舱口盖，是一种舱口盖堆放于另一个舱盖上面的开启型式，目的是满足尽可能大的开口和节约堆放空间。舱口盖的垂向运动通常采用液压油缸操控。

The Piggy-back Type Hatch Covers are similar to the Side Rolling Type but where covers can be stacked on top of each other to satisfy the hatch opening as large as possible and reduce stowage space. This operation is usually managed by hydraulic cylinders allowing for the vertical movement.

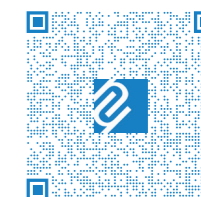
NSH船舶设备提供各种定制的不同舱口盖以适应各种船舶的营运情况。
NSH Ships Equipment delivers a wide range of different hatch covers tailor made to suit with the ship and its operation conditions.

折叠式舱口盖/多块折叠式

Hatch Cover Folding/MF Type

折叠式舱口盖由一些起吊设备或折叠装置操控，通常垂直堆放。
The Folding Type Hatch Covers can be operated either by some kind of lifting gear or with folding devices onboard the vessel. They are usually stacked in vertical position.

NSH船舶设备提供各种定制的不同舱口盖以适应各种船舶的营运情况。
NSH Ships Equipment delivers a wide range of different hatch covers tailor made to suit with the ship and its operation conditions.



滚装船和客滚船

RoRo, RoPax

舷门

Side Shell Door

船体外壳可以有多个开口来满足不同的需要，但每一个开口均可能会对整体的水密造成不利。
There can be several of shell openings in a ship, serving different purposes but where each opening might pose a threat to the water integrity.

汽车甲板坡道

Car Deck Ramp

为了能让车辆出入可置于不同高度的升降车辆甲板，必须配备车辆甲板坡道。
To be able to access and exit a liftable/hoistable car deck which can attend different positions, a car deck ramp is necessary which can travel along with the car deck.

为了充分利用货舱容积，并可吊装摆放货物于车辆甲板，此坡道必不可少。
To maximize the cargo stowage volume for different cargo and let the cargo be hoisted and stowed on the card deck ramp is another essential feature which makes the car deck ramp an essential feature.

内部货物升降机

Internal Cargo Elevator

为了能在船舱内甲板间移动货物，可选择采用内部货物升降机，内部货物升降机既可以作为升降机又可以作为水密舱口盖。
To be able to handle cargo between decks inside the ship, internal cargo elevators are an alternative. The cargo elevator can either be a stand-alone unit only acting as an elevator or it can form a watertight barrier when in stowed position fulfilling both the purpose as an elevator as a watertight hatch cover.

系泊 / 观测台

Mooring/Observation Platform

当船舶进入港口时，为使船员有好的视线观察周围的情况，一个好的方案是设置观测台。观测台通常在船上布置得很靠前，底部设铰链，向外折叠。
For the crew to have a good overview of the surrounding's when going into port, observation platforms can be a good alternative. They are often located very forward in the ship, are bottom hinged and folded outwards.

艏跳板

Bow Ramp

在船舶靠港处于开放位置时，艏跳板带有货物装卸的基本功能，跳板除了必须承受重载负荷，也必须能够应付各种船舶移动，比如纵、横倾，另外码头高度和潮差是必须应付的变数。
In open position when the ship is in harbor, the bow ramp is the basic feature to allow loading and unloading of cargo. In addition to all heavy loads the ramp is exposed to, it must be built to handle different ship motions such as heel and trim. Quay heights and tidal differences are other variables which the stern ramp must be built to handle.

在船舶航行中处于关闭/收起位置时，艏跳板有水密门的功能，形成艏门和艏舱间的屏障。
In closed/stowed position when the ship is sailing, the bow ramp may act as a watertight door forming a barrier between the bow door and the inside of the ship.

艏门

Bow Door

艏门是一种复杂的设备，经常承受外力影响，需要设计和制造能经受因恶劣天气而产生的强力撞击。同时它是确保货物妥善装卸的重要设备。
A bow door is a complex type of equipment and constantly exposed to external forces which is designed and built to withstand high slamming forces generated from among the toughest sea conditions there is. At the same time, it is a vital type of equipment in terms of cargo access and must always work properly to assure loading and unloading of cargo.

升降 / 悬挂式车辆甲板

Liftable/Hoistable Car Deck

为确保灵活运用，同时充分利用货舱容积，可选用升降式/悬挂式车辆甲板。
To assure flexibility and at the same time maximize the cargo stowage volume for different cargo, liftable/hoistable card decks is an alternative.

悬挂式车辆甲板采用自备起重装置（液压缸或电动绞盘装置）操作，装置可按需要安装在车辆甲板上或船体上，可在不同高度停止固定，以保持必要净高。
A hoistable car deck is being operated with aid of its own lifting device (hydraulic cylinder or an electrical jigger winch arrangement) which can be mounted in the car deck itself or in the hull depending on situation. It can stop and be secured in different positions to allow necessary clear height.

升降式车辆甲板采用外部起重装置（甲板升降机）操作，但如同悬挂式车辆甲板一样可在不同高度停止固定，以保持必要净高。
A liftable car deck is being operated with an external lifting device (deck lifter) but can as the hoistable car deck stop and be secured in different positions to allow necessary clear height.

舱口盖

Hatch Cover

船舶会有一些甲板开口，以满足不同的用途，但每一开口会对水密和防火产生不利影响。
There can be several of deck openings in a ship, serving different purposes but where each opening might pose a threat to the water and fire integrity.

内部活动/可升降坡道

Internal Tilttable/Hoistable Ramp

为了能在船内甲板间移动货物，可选择采用内部货物升降机。
To be able to access and exit different decks, an internal tilttable/hoistbale ramp can be used.

内部活动/可升降坡道可以使不同货物的存放空间最大化，并且既可以作为升降机又可以作为水密舱口盖。
To maximize the cargo stowage volume for different cargo which makes the internal tilttable/hoistable ramp an essential feature. At the same time the ramp can be used to secure the ships water integrity and fire zones when in closed/stowed position contributing to a multifunction type of equipment.

坡道盖

Ramp Cover

为了充分利用货舱容积，同时确保船舶水密完整性和防火隔离，坡道盖是必不可少的设备。
To maximize the cargo stowage volume for different cargo and at the same time secure the ships water integrity and fire zones, ramp covers are essential equipment.

旅客舷梯

Passenger Gangway

为保障旅客进出安全，是舷梯具有的一项重要特点，舷梯的配置需着重占用小空间和易展易收。
For passengers to access and exit the ship in a safe way, gangways are an important feature. To have a gangway arrangement which takes up small amount of space, is stowable and easy to deploy are other important aspects.

艉跳板 / 艉门

Stern Ramp/Door

船舶靠港时，艉跳板处于打开状态，主要作用是方便装卸货物。坡道除了要承受各种重货外，还要能适应诸如船舶横倾、纵倾等情况。码头的高度和潮汐变化是艉跳板必须能应对的另外因素。
In open position when the ship is in harbor, the stern ramp is the basic feature to allow loading and unloading of cargo. In addition to all heavy loads the ramp is exposed to, it must be built to handle different ship motions such as heel and trim. Quay heights and tidal differences are other variables which the stern ramp must be built to handle.

船舶航行中，艉跳板处于关闭/收起位置时，艉跳板具有水密门的功能，形成船舶内外间的屏障。
In closed/stowed position when the ship is sailing, the stern ramp acts as a watertight door forming a barrier between the outside and the inside of the ship.

船舶内门

Bow Inner Door

船舶内门作为补充设备，形成了一道风雨密屏障，安装于船舶防撞舱壁处。和艏门一样，它是一个重要的设备，必须满足SOLAS的特别要求，不能出现问题。
As complementary equipment to a possible bow ramp forming a weathertight barrier, a bow inner door may be installed in the collision bulkhead. Same as the bow door, this is a vital type of equipment which must not fail and where special SOLAS requirements must be followed.

邮轮 Cruise

泳池盖板 / 泳池移动地板

Pool Covers/Movable Pool Flooring

NSH自动化多功能设备把您的愿景转化为现实，是能够充分发挥邮轮上有限空间和重视客人体验的完美设计。

NSH Automated Multipurpose Equipment is developed to transform your vision into reality. It is the perfect solution for cruise ships where space is limited and where the guest experience is the most important.

设备可以组装在水面下，用以调整泳池水深，将泳池部分或全部改变为舞池，还能作为舞台和船长工作台。

It can be installed below water and used to adjust the pool height or transform the whole or part of the pool to a dance floor. Other typical areas are theatre staged and captain's table.

舷门

Side Shell Door

船体外壳可以有多个开口来满足不同的需要，但每一个开口均可能会对整体的水密造成不利。

There can be several of shell openings in a ship, serving different purposes but where each opening might pose a threat to the water integrity.

旅客舷梯

Passenger Gangway

保障旅客进出安全，是舷梯具有的一项重要特点，舷梯的配置需着重占空间小和易展易收。

For passengers to access and exit the ship in a safe way, gangways are an important feature. To have a gangway arrangement which takes up small amount of space, is stowable and easy to deploy are other important aspects.

舱口盖

Hatch Cover

船上会有一些甲板开口，以满足不同的用途，但每一开口均可能会对水密和防火产生不利影响。

There can be several of deck openings in a ship, serving different purposes but where each opening might pose a threat to the water and fire integrity.

系泊 / 观测台

Mooring/Observation Platform

当船舶进入港口时，为使船员有一个好的视线观察周围的情况，好的方案是设置观测台。观测台通常在船上布置得很靠前，底部设铰链，向外折叠。For the crew to have a good overview of the surrounding's when going into port, observation platforms can be a good alternative. They are often located very forward in the ship, are bottom hinged and folded outwards.

系泊舱口盖

Mooring Hatches

系泊舱口盖通常用于防治系泊平台在海上时进水，但在入港时观测期间可打开。

Mooring hatches are often used to prevent water from entering the mooring deck while at sea, but which can be opened in port during mooring.

船艀游泳平台

Marina Platform

船艀游泳平台是另一种多功能设备，通常设置在船艀近海平面的方尾横梁处，具有多种用途：能服务于豪华区域使旅客更加接近大海，同时作为接驳旅客的小船停靠处。

A marina platform is another type of multifunction equipment, often located on the transom close to the water line and can serve different purposes. It can serve as a luxury area which allows passengers to come closer to the sea and at the same time providing the possibility of passenger transits by tender boats.

接驳平台

Tender Platform

当船舶在海上，辅助平台打开时，它的基本功能是为旅客提供上下辅助艇的通道，以便安全有效地运输。

In open position when the ship is at sea, the tender platform is the basic feature to allow passenger transits by tender boats where they can be moored against the tender platform allowing a safe and efficient transit.

在船舶航行中处于关闭/收起位置时，接驳平台有水密门的功能，形成邮轮内外间的屏障。

In closed/stowed position when the ship is sailing, the tender platform acts as a watertight door forming a barrier between the outside and the inside of the ship.

载人 / 无人接驳船和潜水器收放系统

Launch and Recovery System for Manned/Unmanned

Tender Boat and Submarine Operations

以小船接驳旅客越来越普遍，有些船舶也完全依赖这种方式接送旅客，因此这项设备非常重要，必须始终正常运作，以确保接驳旅客时安全有效。Passenger transfers by tender boats are being more popular and where some ships are totally dependent on it. This makes the equipment very vital and where it must always work properly to assure loading and unloading of passengers in an efficient and safe way.

另外，此类系统能在各种海况下操作不同类型载人的船舶，所以必须符合诸多更严格的要求，并且附有必要的专业能力的操作要求。When the system in addition shall be able to operate different type of watercrafts with personnel inside in different sea states, there are several of additional more strict requirements which must be fulfilled and where special competence must be applied.

舷侧装卸设备

Side Loader

舷侧装卸设备的重要功能是装卸重型货物，除了要能承受重载负荷，也必须能够应付不同码头高度和潮差。

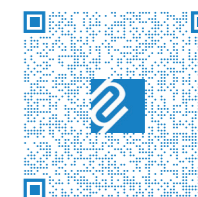
The side loader is the basic feature to allow loading and unloading of heavier type of cargo. In addition to all heavy loads the equipment is exposed to, it must be built to handle different quay heights and tidal differences.

舷侧装卸设备通常为了在船内不同甲板层间移动货物，还要有根据船体与码头的距离而伸缩的功能，使装卸安全高效。

The side loader is often built to operate between different decks inside the vessel and have a telescopic feature allowing it to shrink the distance between side shell and quay for more efficient and safe handling.

舷侧装卸设备通常设计成既可以将托盘等货物放置在其顶板上，又能作为悬挂式舷边装卸设备。

It is often designed as a platform where pallets and similar can be placed on top of the top plate, but it can also be designed as an overhead type of side loader.



海洋工程 Offshore

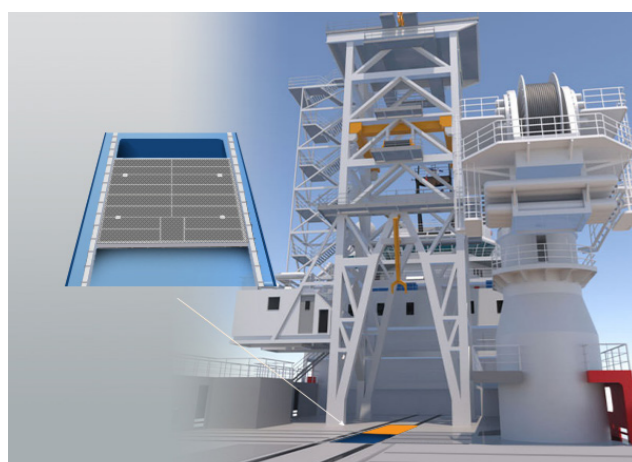
ROV机库门 ROV Hangar Door

船体外壳上可有数个不同功能的开口，在机库区域的船体外壳开口通常用于收放遥控无人潜水器ROV和其它工具/仪器。

There can be several of shell openings in a ship, serving different purposes. Openings in the shell within the area of the hangar are often used for Launch and Recovery of Remote Operated Vehicles ROVs and other tools/instruments.

为确保航行时以及运作ROV期间，机库内良好的工作环境，可以采用不同类型的ROV机库门构思。

To assure good working conditions inside the hangar both during sea voyage and during ROV operation, different kind of ROV Hangar Door concepts can be utilized.



月池布置

Moon Pool Arrangement

收放遥控无人潜水器ROV和其它工具/仪器是一项相当困难的作业，尤其是在海上容易受到风、浪、冰的影响，对设备和船员可能构成额外威胁。

Launch and recovery of Remote Operated Vehicles ROVs and other tools/instruments is a critical operation. Especially in an offshore environment where elements such as wind, waves and ice might pose an additional threat to the equipment and crew.

因此，月池布置是为一种通过舱口盖进入水下的方法，这可以设置在有保护的机库内，让技术或研究人员将设备降入海里，无需暴露在露天甲板上。

A moon pool arrangement is therefore one type of solution giving access to the water below through a hatch cover. It can be located inside a protected hangar, allowing technicians or researchers to lower the equipment into the sea without having to be exposed for elements as on an open deck.

设备也可以以更安全的方式收放，即在月池舱内布置导引装置，以便控制作业运行。月池也可让潜水员进出海水过程更安全。

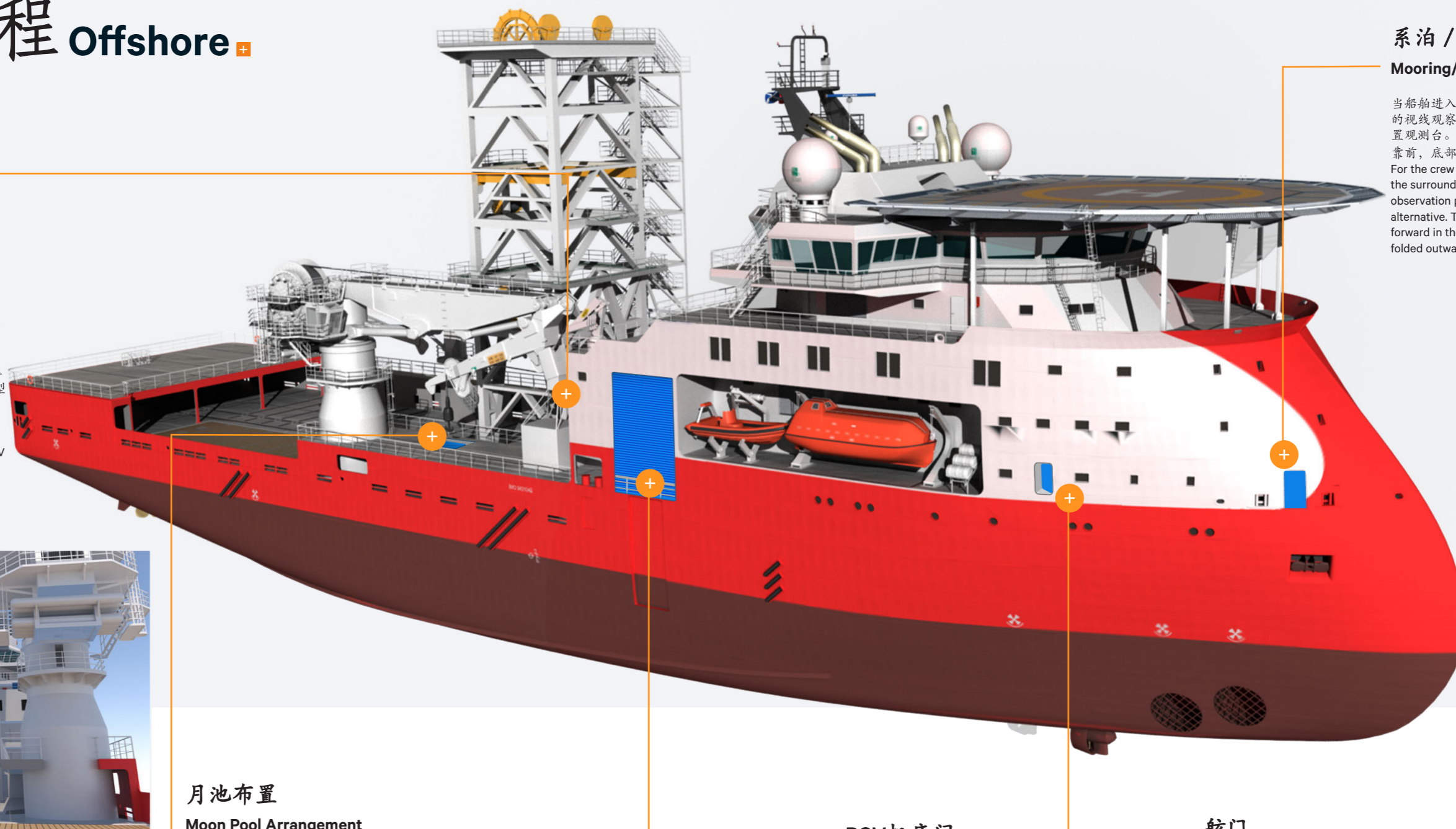
The equipment can also be launched and recovered in a more safe way where guidings can be arranged inside the moon pool hatch assuring a controlled operation. A moon pool may also allow divers to enter or leave the sea in a more protected environment.

系泊 / 观测台

Mooring/Observation Platform

当船舶进入港口时，为使船员有一个好的视线观察周边的情况，好的方案是设置观测台。观测台通常在船上布置得很靠前，底部设铰链，向外折叠。

For the crew to have a good overview of the surrounding's when going into port, observation platforms can be a good alternative. They are often located very forward in the ship, are bottom hinged and folded outwards.



ROV机库门 ROV Hangar Door

船体外壳上可有数个不同功能的开口，在机库区域的船体外壳开口通常用于收放遥控无人潜水器ROV和其它工具/仪器。

There can be several of shell openings in a ship, serving different purposes. Openings in the shell within the area of the hangar are often used for Launch and Recovery of Remote Operated Vehicles ROVs and other tools/instruments.

为确保航行时以及运作ROV期间，机库内良好的工作环境，可以采用不同类型的ROV机库门构思。

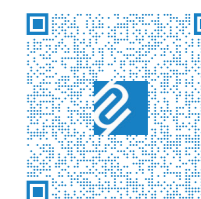
To assure good working conditions inside the hangar both during sea voyage and during ROV operation, different kind of ROV Hangar Door concepts can be utilized.

舷门

Side Shell Door

船体外壳可以有多个开口来满足不同的需要，但每一个开口均可能会对整体的水密造成不利。

There can be several of shell openings in a ship, serving different purposes but where each opening might pose a threat to the water integrity.



SCAN ME

ROV机库门 ROV Hangar Door

船体外壳上可有数个不同功能的开口，在机库区域的船壳开口通常用于收放遥控无人潜水器ROV和其它工具/仪器。
There can be several of shell openings in a ship, serving different purposes. Openings in the shell within the area of the hangar are often used for Launch and Recovery of Remote Operated Vehicles ROVs and other tools/instruments.

为确保航行时以及运作ROV期间，机库内良好的工作环境，可以采用不同类型的ROV机库门构思。
To assure good working conditions inside the hangar both during sea voyage and during ROV operation, different kind of ROV Hangar Door concepts can be utilized.

内部货物升降机 Internal Cargo Elevator

为了能在船舶内部各层甲板之间移动货物，可选择采用内部货物升降机，内部货物升降机既可以作为升降机又可以作为水密舱口盖。
To be able to handle cargo between decks inside the ship, internal cargo elevators are an alternative. The cargo elevator can either be a stand-alone unit only acting as an elevator or it can form a watertight barrier when in stowed position fulfilling both the purpose as an elevator as a watertight hatch cover.

舱口盖 Hatch Cover

船舶上会有一些甲板开口，以满足不同的用途，但每一开口均可能会对水密和防火产生不利影响。
There can be several of deck openings in a ship, serving different purposes but where each opening might pose a threat to the water and fire integrity.

舷门 Side Shell Door

船体外壳可以有多个开口来满足不同的需要，但每一个开口均可能会对整体的水密造成不利。
There can be several of shell openings in a ship, serving different purposes but where each opening might pose a threat to the water integrity.

载人 / 无人接驳船和潜水器 收放系统

Launch and Recovery System for Manned/Unmanned Tender Boat and Submarine Operations

以小船接驳旅客越来越普遍，有些船舶也完全依赖这种方式接送旅客，因此这项设备非常重要，必须始终正常运作，以确保接载旅客时安全有效。
Passenger transfers by tender boats are being more popular and where some ships are totally dependent on it. This makes the equipment very vital and where it must always work properly to assure loading and unloading of passengers in an efficient and safe way.

另外，此类系统应能在各种海况下操作不同类型载人的船舶，所以必须符合若干更严格的要求，并且必须具备额外的专业能力的要求。
When the system in addition shall be able to operate different type of watercrafts with personnel inside in different sea states, there are several of additional more strict requirements which must be fulfilled and where special competence must be applied.

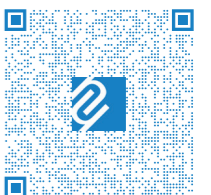
舷门（顶部铰链外开式库门） Side Shell Door (Top hinged garage door operated outwards)

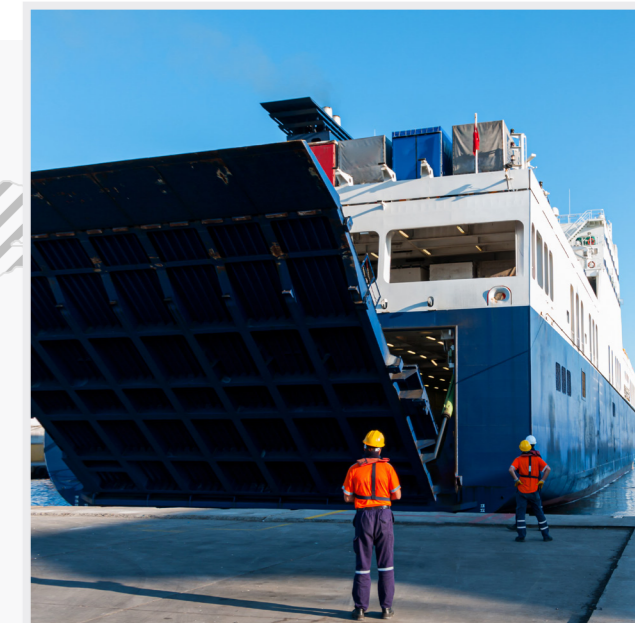
船体外壳可以有多个开口来满足不同的需要，但每一个开口均可能会对整体的水密造成不利。
There can be several of shell openings in a ship, serving different purposes but where each opening might pose a threat to the water integrity.

直升机升降设备 Helicopter Elevator

为能在船舶内部空间层处理货物，确保灵活运用，同时充分利用货舱容积，可选择采用货物升降机。升降机可为独立装置仅用于升降，或可在收起位置形成水密屏障，达到作为升降机和舱口盖的双重目的。
To be able to handle cargo between decks on a ship, assure flexibility and at the same time maximize the stowage volume, cargo elevators is an alternative. The cargo elevator can either be a stand-alone unit only acting as an elevator or it can form a watertight barrier when in stowed position, fulfilling both the purpose as an elevator and as a watertight hatch cover.

此类设备有许多应用方法，比如能在船舶内部各层甲板之间处理有人或无人的直升机。
There are numerous fields of application for this type of equipment and where handling of helicopters between different decks with/without personnel is one example.





服务网点SERVICE POINT.



备件&物流
SPARES
& LOGISTICS



检查
INSPECTIONS



现代化&更新
MODERNISATIONS
& UPGRADES



维护&修理
MAINTENANCE
& REPAIRS



更换
REPLACEMENTS



转换
CONVERSIONS

North Sea Handling 是一家致力于为航运业提供货运/客运通道设备和减少能耗领域的市场领先的解决方案的国际公司。

North Sea Handling is an international company focusing on providing the maritime industry with market-leading solutions within cargo/passenger access equipment and energy efficiency.

我们的设备对确保船上安全起着至关重要的作用，对商业运作至关重要。因此，对我们来说，重要的是我们的客户可以在其业务范围内24小时依赖North Sea Handling的服务能力。我们也是少数几家获得挪威和瑞典海事当局授权的公司之一，可以对船舶、渔船和海上移动式甲板起重机上的货物处理设备进行了初步认证和定期控制。

Our equipment plays a vital role to ensuring safety onboard and essential to the business operations. To us it is therefore important that our clients can rely on North Sea Handlings service capabilities twenty-four-seven within the area of their operations. We are also one of the few companies authorized by Norwegian and Swedish maritime authorities to carry out initial certifications and periodic control of cargo-handling equipment on ships, fishing vessels and deck cranes on mobile offshore units.

持久创新是我们日常工作的关键，我们与合作伙伴一起努力开发设备、创新理念，以满足客户当前和未来的需求。Innovation and long-term-philosophy are keywords in our everyday work and together with our partners we are pushing boundaries to develop equipment and concepts to meet our customers' current and future needs.



SCAN ME



NSH **BRIGHTSEAS**
上海诺实湃海海洋科技有限公司



HEADQUARTER
NORWAY

OFFICE & SERVICE POINT
GDANSK

OFFICE & SERVICE POINT
MIAMI

OFFICE & SERVICE POINT
GOTHENBURG

OFFICE & SERVICE POINT
TURKU

OFFICE & SERVICE POINT
SHANGHAI

SERVICE POINTS - China: Hong Kong, Guangzhou, Tianjin, Dalian | Rotterdam | Dubai | Singapore | Athens

www.northseahandling.com